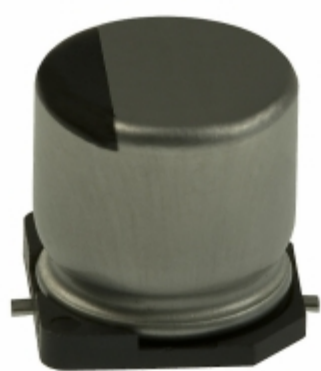


EEE-HA1E4R7AR



Images are for reference only.
See Product Specifications for product details.
Buy EEE-HA1E4R7AR with confidence from
Component-World.HK, 1 Year Warranty

Panasonic

Part Number: [EEE-HA1E4R7AR](#)

Manufacturer: [Panasonic](#)

Description: CAP ALUM 4.7UF 20% 25V SMD

Data sheet: [HA Series Type V, Suffix A](#)

[Aluminum Elect Caps, Part Number System](#)

RoHS Status: Lead free / RoHS Compliant

Ship From: Hong Kong

Shipment Way: DHL/Fedex/TNT/UPS/EMS

[Request For Quotation](#)

PRODUCT PARAMETER

| | | | |
|--|---|---|---|
| Part Number | EEE-HA1E4R7AR | Manufacturer | Panasonic |
| Description | CAP ALUM 4.7UF 20% 25V SMD | Lead Free Status / RoHS Status | Lead free / RoHS Compliant |
| Quantity Available | 712733 pcs | Data sheet | HA Series Type V, Suffix A Aluminum Elect Caps, Part Number System |
| Category | Capacitors | Voltage - Rated | 25V |
| Tolerance | ±20% | Surface Mount Land Size | 0.169" L x 0.169" W (4.30mm x 4.30mm) |
| Size / Dimension | 0.157" Dia (4.00mm) | Series | HA |
| Ripple Current @ Low Frequency | 22mA @ 120Hz | Ripple Current @ High Frequency | 37.4mA @ 10kHz |
| Ratings | AEC-Q200 | Polarization | Polar |
| Packaging | Cut Tape (CT) | Package / Case | Radial, Can - SMD |
| Other Names | PCE4667CT | Operating Temperature | -40°C ~ 105°C |
| Mounting Type | Surface Mount | Moisture Sensitivity Level (MSL) | 1 (Unlimited) |
| Manufacturer Standard Lead Time | 19 Weeks | Lifetime @ Temp. | 1000 Hrs @ 105°C |
| Lead Spacing | - | Lead Free Status / RoHS Status | Lead free / RoHS Compliant |
| Height - Seated (Max) | 0.213" (5.40mm) | ESR (Equivalent Series Resistance) | - |
| Detailed Description | 4.7µF 25V Aluminum Electrolytic Capacitors Radial, Can - SMD 1000 Hrs @ 105°C | Capacitance | 4.7µF |
| Applications | Automotive | | |

Component-World.com is a Reliable Stocking Distributor of Electronic Components. We specialize in all Panasonic series electronic components. We have 712733 pieces of Panasonic EEE-HA1E4R7AR in stock available now. Request a quote from electronics components distributor at Component-World.com, our sales team will contact you within 24 hours.

RFQ Email: info@Components-World.com

RELATED PRODUCTS

| | | | |
|--|---|---|---------------------|
| | Part#: EEE-HA1E330P | Manufacturers: Panasonic | RFQ |
| | Description: CAP ALUM 33UF 20% 25V SMD | | |
| | Part#: EEE-HA1H1R0R | Manufacturers: Panasonic | RFQ |
| | Description: CAP ALUM 1UF 20% 50V SMD | | |
| | Part#: EEE-HA1E331UP | Manufacturers: Panasonic | RFQ |
| | Description: CAP ALUM 330UF 20% 25V SMD | | |
| | Part#: EEE-HA1E330WR | Manufacturers: Panasonic | RFQ |
| | Description: CAP ALUM 33UF 20% 25V SMD | | |
| | Part#: EEE-HA1H101P | Manufacturers: Panasonic | RFQ |
| | Description: CAP ALUM 100UF 20% 50V SMD | | |
| | Part#: EEE-HA1E470AP | Manufacturers: Panasonic | RFQ |
| | Description: CAP ALUM 47UF 20% 25V SMD | | |
| | Part#: EEE-HA1H101UP | Manufacturers: Panasonic | RFQ |
| | Description: CAP ALUM 100UF 20% 50V SMD | | |
| | Part#: EEE-HA1H101AP | Manufacturers: Panasonic | RFQ |
| | Description: CAP ALUM 100UF 20% 50V SMD | | |
| | Part#: EEE-HA1E4R7R | Manufacturers: Panasonic | RFQ |
| | Description: CAP ALUM 4.7UF 20% 25V SMD | | |
| | Part#: EEE-HA1H220AP | Manufacturers: Panasonic | RFQ |
| | Description: CAP ALUM 22UF 20% 50V SMD | | |
| | Part#: EEE-HA1E330AP | Manufacturers: Panasonic | RFQ |
| | Description: CAP ALUM 33UF 20% 25V SMD | | |
| | Part#: EEE-HA1E331P | Manufacturers: Panasonic | RFQ |
| | Description: CAP ALUM 330UF 20% 25V SMD | | |
| | Part#: EEE-HA1H220P | Manufacturers: Panasonic | RFQ |
| | Description: CAP ALUM 22UF 20% 50V SMD | | |
| | Part#: EEE-HA1E471P | Manufacturers: Panasonic | RFQ |
| | Description: CAP ALUM 470UF 20% 25V SMD | | |
| | Part#: EEE-HA1E470WP | Manufacturers: Panasonic | RFQ |
| | Description: CAP ALUM 47UF 20% 25V SMD | | |
| | Part#: EEE-HA1H100AP | Manufacturers: Panasonic | RFQ |
| | Description: CAP ALUM 10UF 20% 50V SMD | | |
| | Part#: EEE-HA1H1R0AR | Manufacturers: Panasonic | RFQ |
| | Description: CAP ALUM 1UF 20% 50V SMD | | |
| | Part#: EEE-HA1E470P | Manufacturers: Panasonic | RFQ |
| | Description: CAP ALUM 47UF 20% 25V SMD | | |
| | Part#: EEE-HA1H100P | Manufacturers: Panasonic | RFQ |
| | Description: CAP ALUM 10UF 20% 50V SMD | | |
| | Part#: EEE-HA1E331AP | Manufacturers: Panasonic | RFQ |
| | Description: CAP ALUM 330UF 20% 25V SMD | | |

Related keywords for EEE-HA1E4R7AR

| | | | |
|--|---|--|---|
| Panasonic EEE-HA1E4R7AR | EEE-HA1E4R7AR distributor | EEE-HA1E4R7AR supplier | EEE-HA1E4R7AR price |
| EEE-HA1E4R7AR download datasheet | EEE-HA1E4R7AR datasheet | EEE-HA1E4R7AR stock | buy EEE-HA1E4R7AR |
| Panasonic EEE-HA1E4R7AR | Panasonic - Consumer Division EEE-HA1E4R7AR | Panasonic - Consumer Electronics Corp. EEE-HA1E4R7AR | Panasonic Battery Group EEE-HA1E4R7AR |
| Panasonic Electronic Components - Semiconductor Pr EEE-HA1E4R7AR | Panasonic - ATG EEE-HA1E4R7AR | Panasonic - BSG EEE-HA1E4R7AR | Panasonic Electric Works - ACSD EEE-HA1E4R7AR |
| | Panasonic Electric Works EEE-HA1E4R7AR | Panasonic Electronic Components EEE-HA1E4R7AR | Panasonic - DTG EEE-HA1E4R7AR |
| | | | Panasonic Industrial Automation Sales EEE-HA1E4R7AR |
| Panasonic Semiconductor EEE-HA1E4R7AR | | | |

